

# SuperLife Invest

## Ethica Fund

### Fund update for the quarter ended 30 June 2021

This fund update was first made publicly available on 28 July 2021.

### What is the purpose of this update?

This document tells you how the Ethica Fund has performed and what fees were charged. The document will help you to compare the fund with other funds. Smartshares Limited prepared this update in accordance with the Financial Markets Conduct Act 2013. This information is not audited and may be updated.

### Description of this fund

Invests in a mix of income and growth assets and designed for investors that want a balanced investment option. A socially responsible fund which excludes assets that do not meet the fund's defined ethical investment standards. Negative annual returns may occur once in every 5-7 years on average.

Total value of the fund: \$108,581,265

The date the fund started: 28 October 2016

### What are the risks of investing?

#### Risk indicator for the Ethica Fund<sup>1</sup>



The risk indicator is rated from 1 (low) to 7 (high). The rating reflects how much the value of the fund's assets goes up and down. A higher risk generally means higher potential returns over time, but more ups and downs along the way.

To help you clarify your own attitude to risk, you can seek financial advice or work out your risk profile at [sorted.org.nz/tools/investor-kickstarter](https://sorted.org.nz/tools/investor-kickstarter).

Note that even the lowest category does not mean a risk-free investment, and there are other risks that are not captured by this rating.

This risk indicator is not a guarantee of a fund's future performance. The risk indicator is based on the returns data for 5 years to 30 June 2021. While risk indicators are usually relatively stable, they do shift from time to time. The risk indicator will continue to be updated in future fund updates.

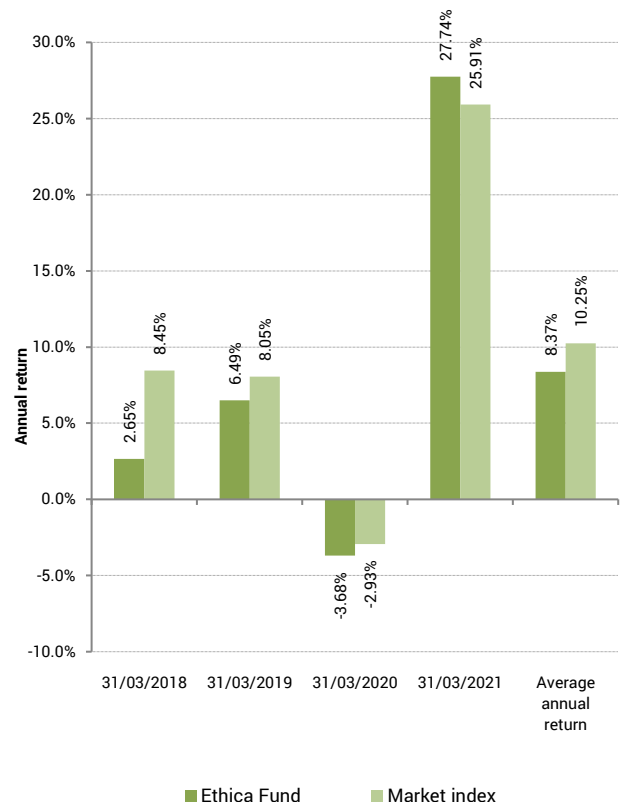
See the Product Disclosure Statement for SuperLife Invest for more information about the risks associated with investing in this fund.

### How has the fund performed?

	Past year
<b>Annual return</b> (after deductions for charges and tax)	20.20%
<b>Annual return</b> (after deductions for charges but before tax)	21.21%
<b>Market index annual return</b> (reflects no deduction for charges and tax)	19.45%

The market index annual return is based on the weighted average annual return of the market indices used to measure the performance of the assets that the fund invests in. Additional information about the market index is available in the 'Other Material Information' document on the offer register at [disclose-register.companiesoffice.govt.nz](https://disclose-register.companiesoffice.govt.nz).

### Annual return graph





This shows the return after fund charges and tax for each year ending 31 March since the fund started. The last bar shows the average annual return since the fund started, up to 30 June 2021.

**Important:** This does not tell you how the fund will perform in the future.

Returns in this update are after tax at the highest prescribed investor rate (PIR) of tax for an individual New Zealand resident. Your tax may be lower.

### What fees are investors charged?

Investors in the Ethica Fund are charged fund charges. In the year to 31 March 2021 these were:

	% per annum of fund's net asset value
<b>Total fund charges</b>	0.60%
Which are made up of:	
<b>Total management and administration charges</b>	0.60%
Including:	
Manager's basic fee	0.59%
Other management and administration charges	0.01% <sup>2</sup>
<b>Other charges</b>	<b>Dollar amount per investor</b>
Administration fee	\$12 per annum <sup>3</sup>

Investors may also be charged individual action fees for specific actions or decisions (for example, if an investor has a financial adviser and has agreed to pay a fee to the adviser for providing financial advice). See the Product Disclosure Statement for SuperLife Invest for more information about those fees.

Small differences in fees and charges can have a big impact on your investment over the long term.

The fees set out above include GST where applicable.

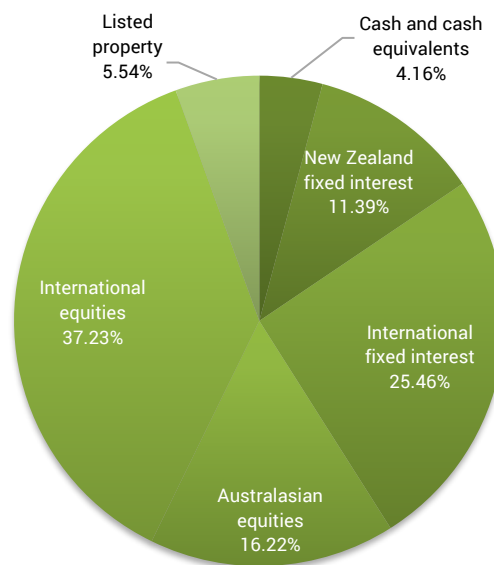
### Example of how this applies to an investor

Jess had \$10,000 in the fund and did not make any further contributions. At the end of the year, Jess received a return after fund charges were deducted of \$2,020 (that is 20.20% of her initial \$10,000). Jess paid other charges of \$12. This gives Jess a total return after tax of \$2,008 for the year.

### What does the fund invest in?

#### Actual investment mix

This shows the types of assets that the fund invests in.



#### Target investment mix

This shows the mix of assets that the fund generally intends to invest in.

Asset Category	Target asset mix
Cash and cash equivalents	1.00%
New Zealand fixed interest	13.00%
International fixed interest	26.00%
Australasian equities	14.50%
International equities	38.00%
Listed property	7.50%
Unlisted property	-
Commodities	-
Other	-



## Top 10 investments

Name	% of fund's net asset value	Type	Country	Credit rating (if applicable)
Dimensional Global Sustainability Trust NZD Hedged	29.26%	International equities	Australia	
Dimensional Global Bond Sustainability Trust NZD	25.50%	International fixed interest	Australia	
Dimensional Global Sustainability Trust - Unhedged Class Units	8.03%	International equities	Australia	
Dimensional Australian Sustainability Trust	3.91%	Australasian equities	Australia	
Vanguard International Property Securities Index Fund Hedged	3.65%	Listed property	Australia	
ANZ NZD Current Account	2.98%	Cash and cash equivalents	New Zealand	AA-
New Zealand Government 20/09/25 2.0% IB	0.73%	New Zealand fixed interest	New Zealand	AAA
Mainfreight Ltd	0.60%	Australasian equities	New Zealand	
Spark New Zealand Ltd	0.57%	Australasian equities	New Zealand	
Fletcher Building Ltd	0.55%	Australasian equities	New Zealand	

The top 10 investments make up 75.78% of the fund's net asset value.

## Currency hedging

The fund's foreign currency exposure is not hedged, but the fund invests in other funds which foreign currency exposure is hedged to the New Zealand dollar.

## Key personnel

This shows the directors and employees who have the most influence on the investment decisions of the fund:

Name	Current position	Time in current position	Previous or other positions	Time in previous / other position
Guy Roulston Elliffe	Director	5 years and 7 months	Corporate Governance Manager - ACC (current position)	6 years and 2 months
Stuart Kenneth Reginald Millar	Chief Investment Officer - Smartshares	2 years and 1 month	Head of Portfolio Management - ANZ Investments	6 years and 4 months
Hugh Duncan Stevens	Chief Executive Officer - Smartshares	3 years and 4 months	Chief Operating Officer - Implemented Investment Solutions Ltd	2 years and 6 months
Alister John Williams	Director	5 years and 7 months	Investment Manager - Trust Management	6 years and 5 months

## Further information

You can also obtain this information, the Product Disclosure Statement for SuperLife Invest, and some additional information, from the offer register at [disclose-register.companiesoffice.govt.nz](https://disclose-register.companiesoffice.govt.nz).

## Notes

- Market index returns (as well as actual returns) have been used to complete the risk indicator, as the fund has not been in existence for 5 years. As a result, the risk indicator may provide a less reliable indicator of the potential future volatility of the fund. The risk indicator for the fund uses 4 months of market index returns.
- We charge fixed fund charges that cover normal fund operating costs. For disclosure purposes, supervisor, audit and legal costs are not included in the manager's basic fee, but are included in the other management and administration charges.
- The administration fee in the year to 31 March 2021 is stated net of an income tax deduction that was applied in calculating your PIE tax payable (the deduction was paid to us). On 1 April 2021, we stopped doing this – this means that if your prescribed investor rate is 10.5%, 17.5% or 28%, the total fee you now pay us will be lower.